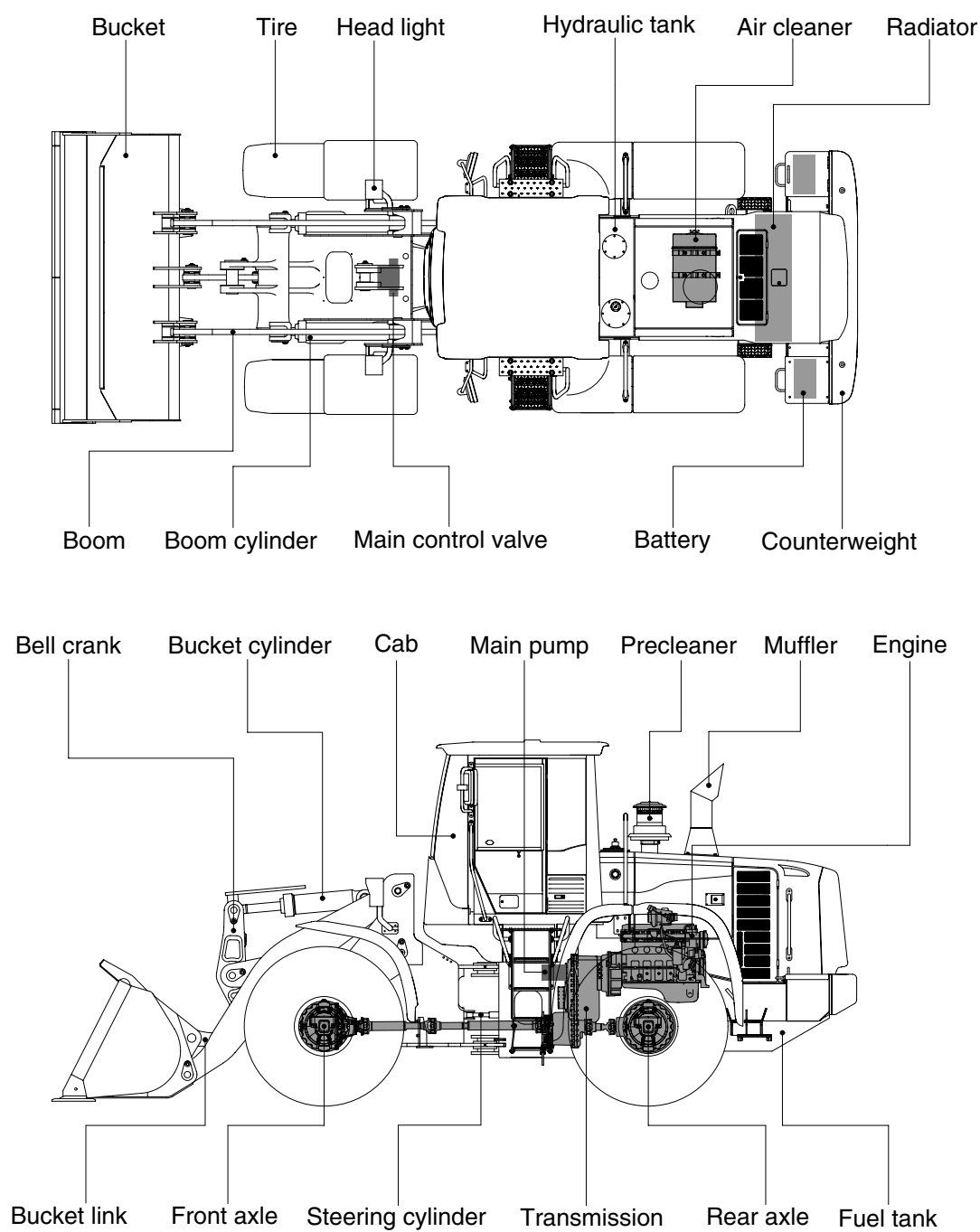


2. SPECIFICATIONS

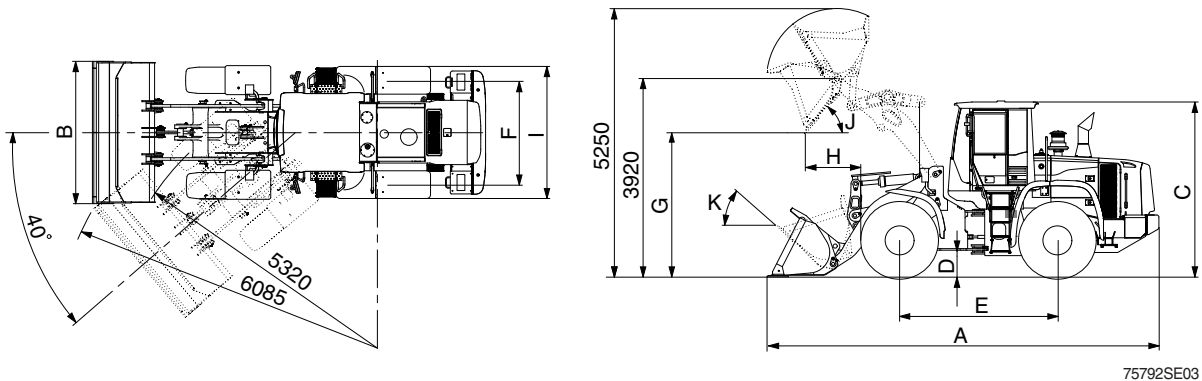
1. MAJOR COMPONENTS



75792SE01

2. SPECIFICATIONS

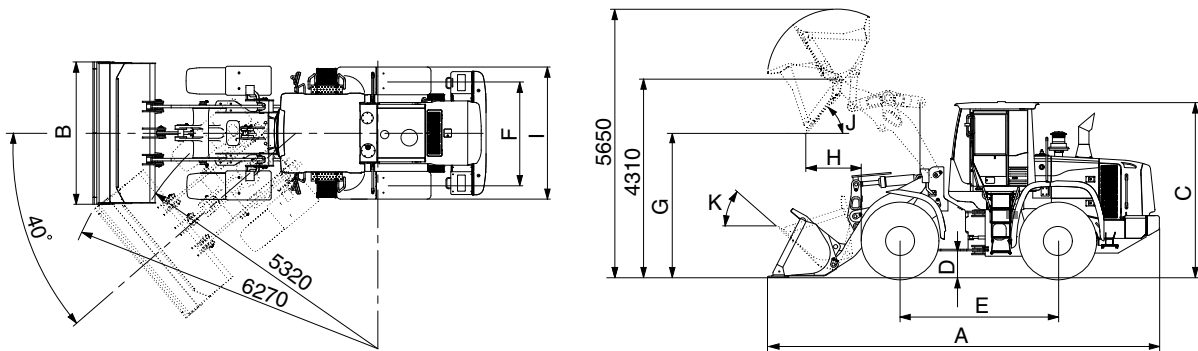
1) WITH BOLT-ON CUTTING EDGE TYPE BUCKET (HL757-9)



75792SE03

Description			Unit	Specification
Operating weight			kg (lb)	14500 (32000)
Bucket capacity	Struck		m³ (yd³)	2.4 (3.1)
	Heaped			2.8 (3.7)
Overall length	A		mm (ft-in)	7580 (24' 10")
Overall width	B			2740 (9' 0")
Overall height	C			3310 (10' 10")
Ground clearance	D			410 (1' 4")
Wheelbase	E			3050 (10' 0")
Tread	F			2050(6' 9")
Dump clearance at 45°	G			2840 (9' 4")
Dump reach (full lift)	H			1070 (3' 6")
Width over tires	I			2580 (8' 6")
Dump angle	J			degree (°)
Roll back angle (carry position)	K		48	
Cycle time	Lift (with load)		sec	5.9
	Dump (with load)			1.1
	Lower (empty)			3.8
Maximum travel speed			km/hr (mph)	37.7 (23.5)
Braking distance			m (ft-in)	12 (39' 4")
Minimum turning radius (center of outside tire)				5.32 (17' 5")
Gradeability			degree (°)	30
Travel speed	Forward	First gear	km/hr (mph)	6.9 (4.3)
		Second gear		11.4 (7.1)
		Third gear		23.0 (14.3)
		Fourth gear		37.7 (23.5)
	Reverse	First gear		7.3 (4.5)
		Second gear		12.1 (7.5)
Third gear		24.2 (15)		

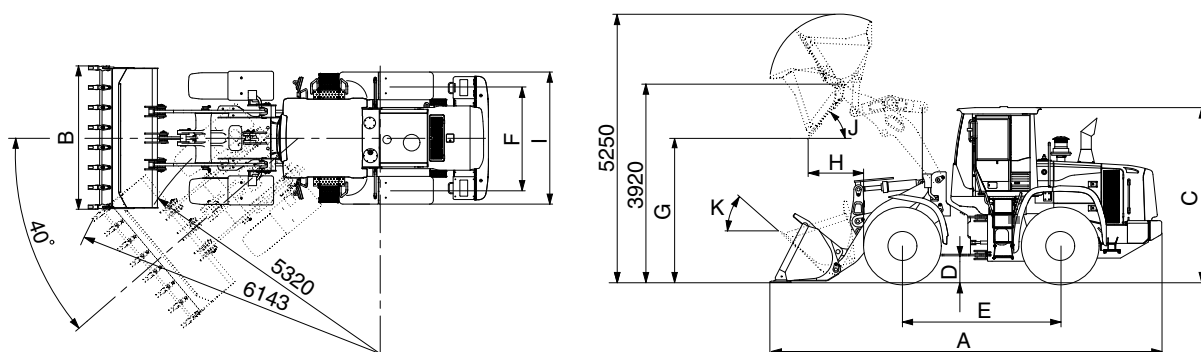
WITH BOLT-ON CUTTING EDGE TYPE BUCKET (HL757XTD-9)



75792SE03-1

Description			Unit	Specification
Operating weight			kg (lb)	15000 (33000)
Bucket capacity	Struck		m³ (yd³)	2.4 (3.1)
	Heaped			2.8 (3.7)
Overall length	A		mm (ft-in)	7990 (26' 3")
Overall width	B			2740 (9' 0")
Overall height	C			3310 (10' 10")
Ground clearance	D			410 (1' 4")
Wheelbase	E			3050 (10' 0")
Tread	F			2050 (6' 9")
Dump clearance at 45°	G			3230 (10' 7")
Dump reach (full lift)	H			1100 (3' 7")
Width over tires	I			2580 (8' 6")
Dump angle	J		degree (°)	47
Roll back angle (carry position)	K			50
Cycle time	Lift (with load)		sec	5.9
	Dump (with load)			1.1
	Lower (empty)			3.8
Maximum travel speed			km/hr (mph)	37.7 (23.5)
Braking distance			m (ft-in)	12 (39' 4")
Minimum turning radius (center of outside tire)				5.32 (17' 5")
Gradeability			degree (°)	30
Travel speed	Forward	First gear	km/hr (mph)	6.9 (4.3)
		Second gear		11.4 (7.1)
		Third gear		23.0 (14.3)
		Fourth gear		37.7 (23.5)
	Reverse	First gear		7.3 (4.5)
		Second gear		12.1 (7.5)
		Third gear		24.2 (15.0)

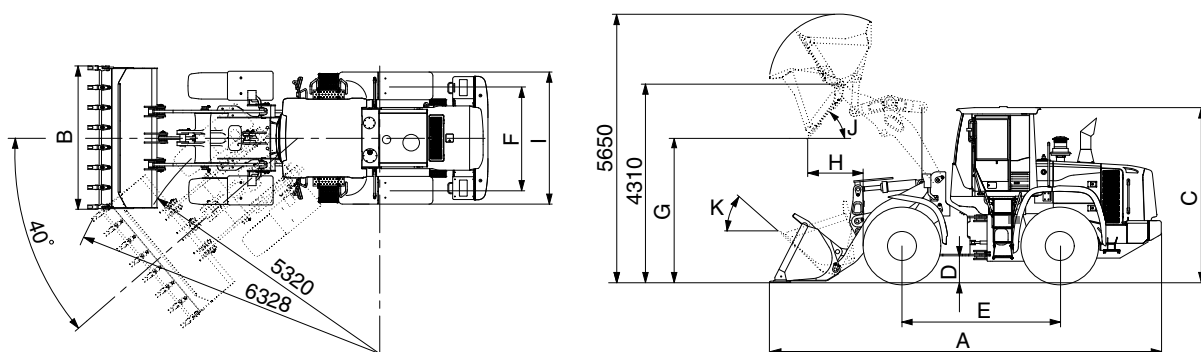
2) WITH TOOTH TYPE BUCKET (HL757-9)



75792SE02

Description			Unit	Specification
Operating weight			kg (lb)	14500 (32000)
Bucket capacity	Struck		m³ (yd³)	2.2 (2.9)
	Heaped			2.6 (3.4)
Overall length	A		mm (ft-in)	7680 (25' 2")
Overall width	B			2790 (9' 2")
Overall height	C			3310 (10' 10")
Ground clearance	D			410 (1' 4")
Wheelbase	E			3050 (10' 0")
Tread	F			2050 (6' 9")
Dump clearance at 45°	G			2750 (9' 1")
Dump reach (full lift)	H			1150 (3' 9")
Width over tires	I			2580 (8' 6")
Dump angle	J			degree (°)
Roll back angle (carry position)	K		48	
Cycle time	Lift (with load)		sec	5.9
	Dump (with load)			1.1
	Lower (empty)			3.8
Maximum travel speed			km/hr (mph)	37.7 (23.5)
Braking distance			m (ft-in)	12 (39' 4")
Minimum turning radius (center of outside tire)				5.32 (17' 5")
Gradeability			degree (°)	30
Travel speed	Forward	First gear	km/hr (mph)	6.9 (4.3)
		Second gear		11.4 (7.1)
		Third gear		23 (14.3)
		Fourth gear		37.7 (23.5)
	Reverse	First gear		7.3 (4.5)
		Second gear		12.1 (7.5)
		Third gear		24.2 (15.0)

WITH TOOTH TYPE BUCKET (HL757XTD-9)



75792SE02-1

Description			Unit	Specification
Operating weight			kg (lb)	15000 (33000)
Bucket capacity	Struck		m³ (yd³)	2.2 (2.9)
	Heaped			2.6 (3.4)
Overall length	A		mm (ft-in)	8100 (26' 7")
Overall width	B			2790 (9' 2")
Overall height	C			3310 (10' 10")
Ground clearance	D			410 (1' 4")
Wheelbase	E			3050 (10' 0")
Tread	F			2050 (6' 9")
Dump clearance at 45°	G			3145 (10' 4")
Dump reach (full lift)	H			1175 (3' 10")
Width over tires	I			2580 (8' 6")
Dump angle	J		degree (°)	47
Roll back angle (carry position)	K			50
Cycle time	Lift (with load)		sec	5.9
	Dump (with load)			1.1
	Lower (empty)			3.8
Maximum travel speed			km/hr (mph)	37.7 (23.5)
Braking distance			m (ft-in)	12 (39' 4")
Minimum turning radius (center of outside tire)				5.32 (17' 5")
Gradeability			degree (°)	30
Travel speed	Forward	First gear	km/hr (mph)	6.9 (4.3)
		Second gear		11.4 (7.1)
		Third gear		23.0 (14.3)
		Fourth gear		37.7 (23.5)
	Reverse	First gear		7.3 (4.5)
		Second gear		12.1 (7.5)
		Third gear		24.2 (15.0)

3. WEIGHT

Item		kg	lb
Front frame assembly		1162	2560
Rear frame assembly		1702	3750
Front fender (LH & RH)		31	68
Counterweight	HL757-9	570	1260
	HL757XTD-9	840	1850
Cab assembly		1050	2320
Engine assembly		485	1070
Transmission assembly		470	1040
Drive shaft (front)		18	40
Drive shaft (center)		17	37
Drive shaft (rear)		11	24
Front axle (include differential)		640	1410
Rear axle (include differential)		576	1270
Tire (20.5-25, 16PR, L3)		203	448
Hydraulic tank assembly		240	530
Fuel tank assembly		345	760
Main pump assembly		55	121
Fan & brake pump assembly		7	15
Main control valve (2/3 spool)		34 / 41	75 / 90
Steering valve (EHPS)		10	22
Boom assembly	HL757-9	965	2130
	HL757XTD-9	1170	2580
Bell crank assembly		245	540
Bucket link		44	100
2.8 m ³ bucket, with bolt on cutting edge		1190	2620
2.6 m ³ bucket, with tooth		1100	2430
Boom cylinder assembly		105	231
Bucket cylinder assembly		120	265
Steering cylinder assembly		22	49
Seat		40	88
Battery		44	97

4. SPECIFICATION FOR MAJOR COMPONENTS

1) ENGINE

Item	Specification
Model	Cummins QSB6.7 /HYUNDAI HE6.7
Type	4-cycle turbocharged and charge air-cooled diesel engine
Control type	Electronic control
Cooling method	Water cooling
Number of cylinders and arrangement	6 cylinders, in-line
Firing order	1-5-3-6-2-4
Combustion chamber type	Direct injection type
Cylinder bore × stroke	107 × 124 mm (4.2" × 4.9")
Piston displacement	6730 cc (410cu in)
Compression ratio	17.2 : 1
Rated horse power (Gross)	173 hp at 2100 rpm
Maximum torque at 1500 rpm	83 kgf · m (600 lbf · ft)
Engine oil quantity	18 l (4.8 U.S. gal)
Wet weight	485 kg(1069 lb)
High idling speed	2230 ± 50 rpm
Low idling speed	800 ± 25 rpm
Rated fuel consumption	252 g/kW · hr
Starting motor	Nippondenso 228000-7902 (24V-3.7kW)
Alternator	Delco Remy 24SI (24V-70Amp)
Battery	2 × 12V × 130Ah

2) MAIN PUMP

Item	Specification
Type	Variable piston pump
Capacity	50+38 cc/rev
Maximum operating pressure	280 kgf/cm ² (3980 psi)
Rated oil quantity	185 l /min (48.8 U.S.gpm / 40.6 U.K.gpm)
Rated speed	2100 rpm

3) FAN + BRAKE PUMP

Item	Specification	
	Fan	Brake
Type	Fixed displacement tandem gear pump	
Capacity	19.4 cc/rev	11.9 cc/rev
Maximum operating pressure	120 kgf/cm ² (1710 psi)	150 kgf/cm ² (2130 psi)
Rated oil quantity	41 l /min (10.8 U.S.gpm)	25 l /min (6.6 U.S.gpm)
Rated speed	2100 rpm	

4) MAIN CONTROL VALVE

Item	Specification
Type	2 spool
Operating method	Hydraulic pilot assist
System pressure	280 kgf/cm ² (3980 psi)
Overload relief valve pressure	340 kgf/cm ² (4840 psi)

5) REMOTE CONTROL VALVE

Item		Specification
Type		Pressure reducing type
Operating pressure	Minimum	6.5 kgf/cm ² (92.4 psi)
	Maximum	22 kgf/cm ² (312.9 psi)
Single operation stroke	Lever	80 mm (3.4 in)

6) CYLINDER

Item		Specification
Boom cylinder	Bore dia × Rod dia × Stroke	ø 120 × ø 70 × 785 mm
Bucket cylinder	Bore dia × Rod dia × Stroke	ø 140 × ø 75 × 485 mm
Steering cylinder	Bore dia × Rod dia × Stroke	ø 65 × ø 45 × 436 mm

7) DYNAMIC POWER TRANSMISSION DEVICES

Item			Specification
Transmission	Model		4WG190
	Type	Converter	Single-stage, single-phase
		Transmission	Full-automatic power shift
	Converter stall ratio		2.121 : 1
	Gear shift		Forward fourth gear, reverse third gear
	Control		Electrical single lever type, kick-down system
	Pump rated flow		105 ℓ /min (27.7 U.S.gpm) at 2000 rpm
Axle	Drive devices		4-wheel drive
	Front		Front fixed location
	Rear		Oscillation ± 13° of center pin-loaded
Wheels	Tires		20.5-25, 16PR (L3)
Brakes	Travel		Four-wheel, wet-disc type, full hydraulic
	Parking		Spring applied, hydraulic released brake on transmission
Steering	Type		Full hydraulic, articulated
	Steering angle		40° to both right and left angle, respectively